

VENICE INLET - CASEY'S PASS SARASOTA COUNTY, FLORIDA POST-HURRICANE IAN EXAM SURVEY 9-FOOT PROJECT FY23

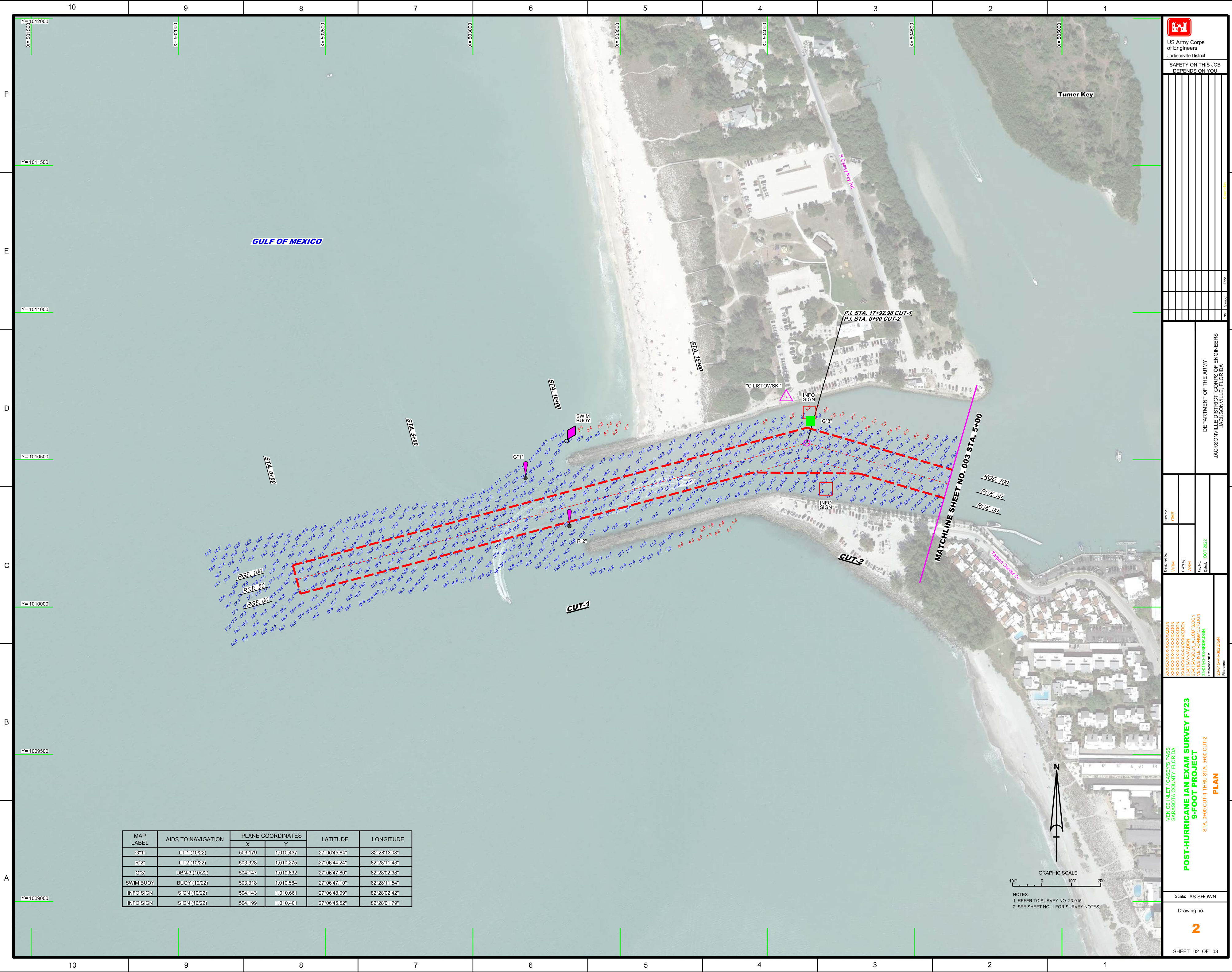
SURVEY NOTES

- REFER TO SURVEY NO. 23-015.
 - SOUNDINGS ARE IN FEET AND TENTHS AND REFER TO NOAA'S REPORTED MEAN LOWER LOW WATER (MLLW) OF THE 1983-2001 TIDAL EPOCH.
 - TIDAL REDUCTIONS WERE OBTAINED UTILIZING A REAL-TIME KINEMATIC (RTK) GPS AND REFERENCED TO MLLW UTILIZING A HYPACK KINEMATIC TIDE DATUM (KTD) MODEL. KTD FILE NAME: "SPC-FL-WEST-2010-12-07.KTD".
 - ALL ELEVATIONS ARE BELOW THE CHART DATUM UNLESS PRECEDED BY A (+) SIGN.
 - PLANE COORDINATES ARE BASED ON THE TRANSVERSE MERCATOR PROJECTION FOR THE WEST ZONE OF FLORIDA AND REFERENCED TO NORTH AMERICAN DATUM OF 1983 (NAD83).
 - ALL STATIONING REFERS TO THE CENTERLINE OF THE CHANNEL.
 - THIS SURVEY WAS PERFORMED USING REAL-TIME KINEMATIC (RTK) GPS POSITIONING WITH THE FOLLOWING REFERENCE BASE LOCATION:
REFERENCE BASE LOCATED AT "C LISTOWSKI" (PID: BBDX69)
 - DEPTHS DEPICTED BY THIS SURVEY ARE REFERENCED TO MLLW, TIDAL EPOCH 1983-2001, AS REPORTED BY THE NATIONAL OCEANIC AND ATMOSPHERIC ADMINISTRATION (NOAA). NOAA'S DATUM MODEL WAS USED TO CALIBRATE TO THE PUBLISHED MLLW HEIGHTS OF THE BENCH MARKS ASSOCIATED WITH THE TIDE GAGE SITES SPECIFIED BELOW:
NOAA TIDAL STATION "872 5899 A" FOR ENTIRE PROJECT (PID: DL9718)
 - VERTICAL MEASUREMENTS WERE MADE USING AN EDGETECH 6205 MULTI-BEAM OPERATING AT 550 KHZ AND AN ECHOTRAC E20 OPERATING AT 28/200 KHZ. ALL SOUNDINGS SHOWN ARE IN HIGH FREQUENCY.
- | VESSEL | DATE OF SURVEY | CUT |
|--------|----------------|-----------------------|
| SB-44 | 10 OCT 2020 | CENICE INLET CUTS 1-4 |
- AIDS TO NAVIGATION WERE LOCATED DURING THIS SURVEY.
 - THE INFORMATION DEPICTED ON THIS MAP REPRESENTS THE RESULTS OF SURVEYS MADE ON THE DATES INDICATED ABOVE AND CAN ONLY BE CONSIDERED AS INDICATING THE GENERAL CONDITIONS AT THAT TIME. THIS CHART IS SOLELY FOR THE DISTRIBUTION OF AVAILABLE DEPTHS AT THE TIME OF THE SURVEY.
 - SURVEY ACCURACY PERFORMANCE STANDARDS, QUALITY CONTROL, AND QUALITY ASSURANCE REQUIREMENTS WERE FOLLOWED DURING THIS SURVEY IN ACCORDANCE WITH USACE EM 1110-2-1003, HYDROGRAPHIC SURVEYING, 30 NOV 2013.


LEGEND	
	MONUMENT
	LIGHTED BEACON
	GREEN DAYBEACON
	RED DAYBEACON
	RED LIGHTED BUOY
	GREEN LIGHTED BUOY
	CAN BUOY
	NUN BUOY
	TIDE STAFF
	PROJECT DEPTH

US Army Corps of Engineers
Jacksonville District
SAFETY ON THIS JOB
DEPENDS ON YOU

<p>DESIGNED BY: WRM CHECKED BY: WRM DATE: OCT 2022</p>	<p>DEPARTMENT OF THE ARMY JACKSONVILLE DISTRICT, CORPS OF ENGINEERS JACKSONVILLE, FLORIDA</p>
<p>VENICE INLET / CASEY'S PASS SARASOTA COUNTY, FLORIDA POST-HURRICANE IAN EXAM SURVEY FY23 9-FOOT PROJECT INDEX, LOCATION AND VICINITY MAP</p>	
<p>Scale: AS SHOWN</p>	<p>Drawing no. 1</p>
<p>SHEET 01 OF 03</p>	



GRAPHIC SCALE
 0 100 200
 NOTES:
 1. REFER TO SURVEY NO. 23-015.
 2. SEE SHEET NO. 1 FOR SURVEY NOTES.

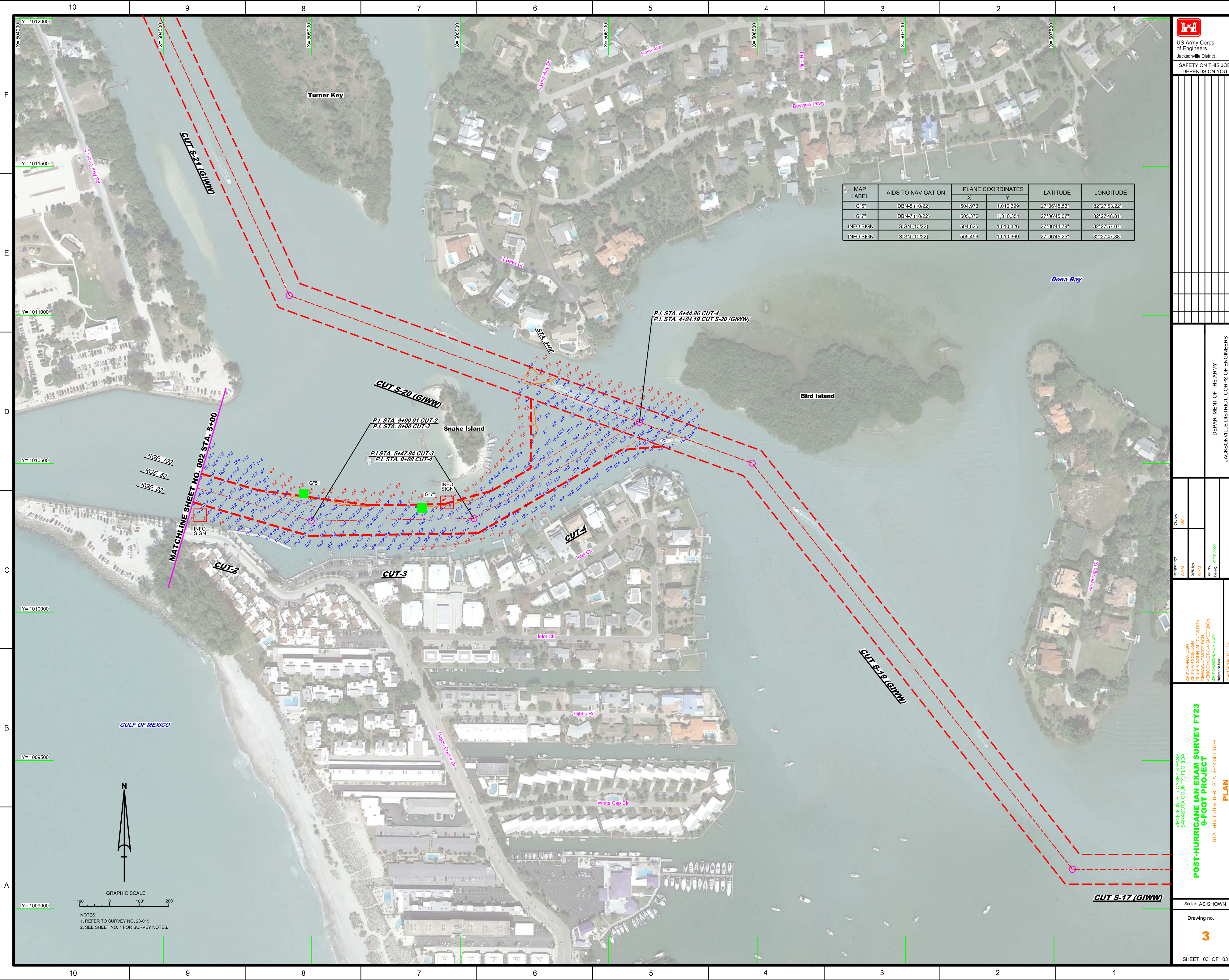


US Army Corps of Engineers
 Jacksonville District
 SAFETY ON THIS JOB
 DEPENDS ON YOU


DESIGNED BY: WRM
 CHECKED BY: GHR
 DATE: OCT 2022

VENICE INLET / CASEY'S PASS
 SARASOTA COUNTY, FLORIDA
POST-HURRICANE IAN EXAM SURVEY FY23
9-FOOT PROJECT
 STA. 0+00 CUT-1 THRU STA. 5+00 CUT-2
PLAN

Scale: AS SHOWN
 Drawing no.
2
 SHEET 02 OF 03



MAP LABEL	AIDS TO NAVIGATION	PLANE COORDINATES		LATITUDE	LONGITUDE
		X	Y		
G-5*	DBN-5 (10/22)	504,973	1,010,399	27°06'45.53"	82°27'53.22"
G-7*	DBN-7 (10/22)	505,372	1,010,351	27°06'45.07"	82°27'48.81"
INFO SIGN	SIGN (10/22)	504,625	1,010,326	27°06'44.79"	82°27'57.07"
INFO SIGN	SIGN (10/22)	505,456	1,010,369	27°06'45.25"	82°27'47.88"



US Army Corps of Engineers
Jacksonville District

**SAFETY ON THIS JOB
DEPENDS ON YOU**

DEPARTMENT OF THE ARMY
JACKSONVILLE DISTRICT, CORPS OF ENGINEERS
JACKSONVILLE, FLORIDA

VENICE INLET / GASEY'S PASS
SARASOTA COUNTY, FLORIDA
**POST-HURRICANE IAN EXAM SURVEY FY23
9-FOOT PROJECT**
STA. 5+00 CUT-2 THRU STA. 6+44.86 CUT-4
PLAN

Scale: AS SHOWN

Drawing no.
3

SHEET 03 OF 03